



KWIKCLAMP®

- brilliantly simple!



- + Clamp fittings
- + Barrier Panels
- + Posts, end terminations, toe plates
- + AS1657 certified & AS1428 compliant

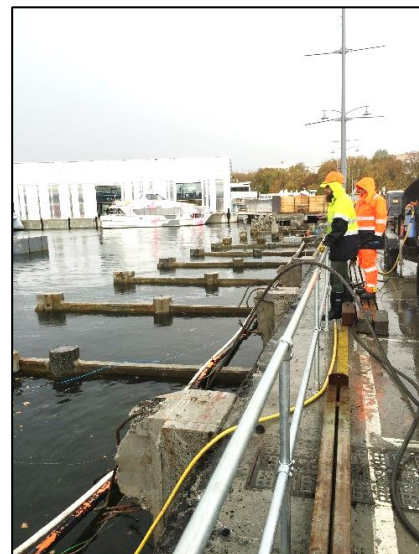
1300 59 00 59

www.kwikclamp.com.au

October 2019

The Kwikclamp® range of modular fittings, posts, rails, end terminations, barrier panels and accessories all comply with the design requirements of AS1657 and AS1428, the Australian Standards for safety barriers in a multitude of applications. All products are hot dip galvanised to comply with AS4680 and have a minimum of 500gsm zinc coating.

Clamp products are made from high quality 450 MPa heat treated steel. Available in C42 and D48 sizes (*other sizes supplied on special order – B34 and E60*), Kwikclamp's fittings are made from malleable or ductile iron with case hardened 15mm long 304 grade stainless steel screws for extra durability, vibration and corrosion resistance in the toughest conditions.

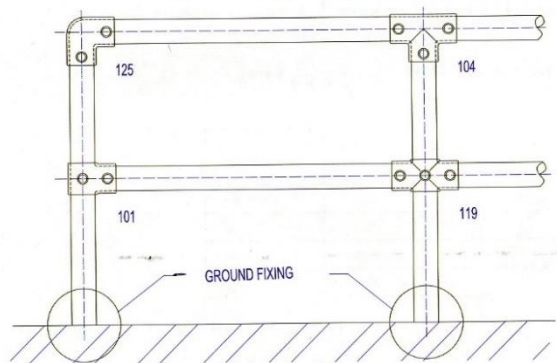


Tube Size Guide

Size Reference	Tube OD (mm)	Nominal Size (mm)
B-34	33.7	25NB
C-42	42.4	32NB
D-48	48.3	40NB
E-60	60.3	50NB

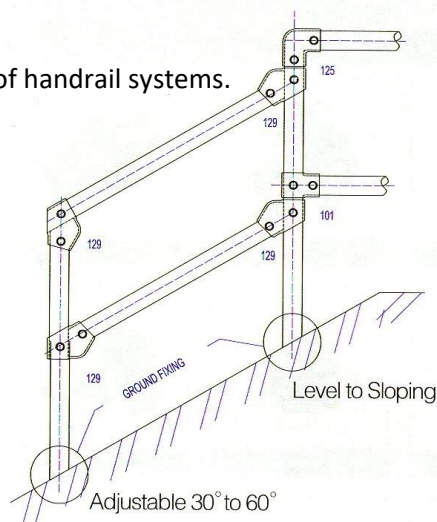
Construction Guide

The following illustrations are a guide for installing different types of handrail systems.

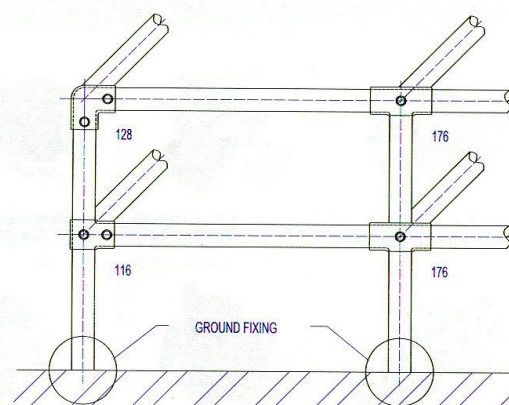
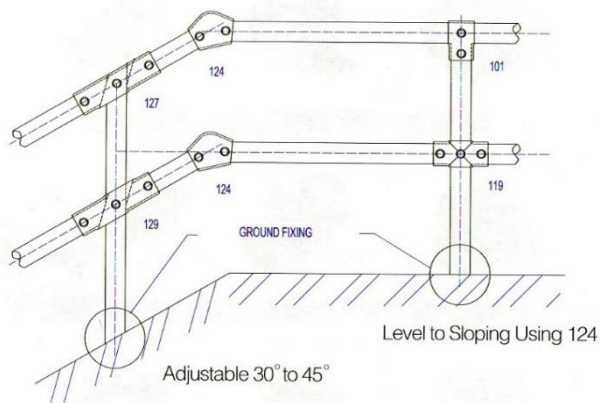


End Post

Mid Post



Check with your designer or specifier before using these possible configurations for any given application.



Corner Post

Divider Post

Kwikclamp products are used in a multitude of applications, initially designed for the safety barrier and hand rail markets; the modular nature of the clamps has given rise to very creative and highly functional applications that include ...

- Bikeway and pedestrian safety barrier systems
- Disability hand rails
- Trolley parking & storage bays
- Mezzanine floor safety barriers & sliding pallet gates
- Road signs
- Retail displays & racking
- Exhibition stands & displays
- General signage
- Fall prevention systems, commercial, industrial & factory safety barriers
- Machinery enclosures & guards
- Roof and walkway guard rails

There are almost infinite number of ways of using the Kwikclamp fittings, barrier panels and accessories to quickly and easily create rigid structures with minimal need for tools and labour. The simple, modular nature of Kwikclamp products makes for less expensive erection of barriers compared to traditional welded or ball type designs.

All Kwikclamp fittings, posts, rails and barrier panels have been independently tested to comply with AS1657 for 2.4m post spacing – the Australian Standard for fixed platforms walkways and stairways as well as complying with AS4680 – galvanising.



- Cost effective
- Fast to erect
- Best value modular system available – certified to 2.4m widths
- Panels and rails comply with AS1657 specifications and AS1428 Disability Design guidelines



Some images in this brochure are used for illustration purposes only and may not be actual Kwikclamp products, any such images are used solely to illustrate generic industry product types and/or applications.

The Kwikclamp Clamp Range

					
101 Short Tee	104 Long Tee	116 3 Way Thru	119 2 Socket Cross	123 Variable Top Elbow	124 Variable Elbow 30-45°
					
125 2 Way 90° Elbow	127 Long Tee 30-45°	128 3 Way 90° Elbow Tee	129 Adjustable Short Tee 30-45°	130 30°-45° Cross	131 Base Wall Flange
					
132 Base Flange (B34 & C42 only)	133 Plastic Cap	138 Gate Eye	140 Gate Hinge	141 Railing Base	145 Railing Side Support
					
146 Side Palm Fixing	148 Short Tee Swivel (sold in pairs)	149 External Sleeve Joiner	150 Internal Sleeve Joiner (expanding)	151 Internal Fixed Sleeve Joiner	152 Base Flange 0-11°
					
153 Short Tee 0-11°	154 Elbow 0-11°	155 Long Tee 0-11°	156 Cross 0-11°	166 Adjustable Swivel	167M Double Male Inline Swivel
					
167 Double Swivel Combination (173F x 2 + 173M)	168M Male Corner Swivel	168 Corner Swivel Assembly (173F x 2 + 168M)	169 Swivel Base (shown as an assembly with a 173F)	172M Male Swivel	172 Swivel Assembly (173F + 172M)
					
173 Single Swivel Combination (173M + 173F)	173M Single Male Swivel	173F Female Swivel	176 Side Outlet Tee	179 Locking Collar	198 Double Fixing Bracket

 199 Single Fixing Bracket	 232 Rectangular Flange Base	 233 Square Base Flange (D48 only)	 242 Toeboard Flange (D48 only)	 246 Side Flange	 251 Base Flange 30-45°
 252 Base Flange 11-29°	 253 Short Tee 11-29°	 255 Long Tee 11-29°	 256 Cross 11-29°	 300 Grub Hex Screws	 333 Alloy End Cap

KWIKCLAMP DDA ASSIST CLAMP RANGE

Smooth inline handrail clamps designed to comply with AS1428 – disability access design guide.



 725 Internal Corner Fixed Sleeve Joiner	 731 Flange Wall Bracket	 746 Support Wall Bracket – small and large wall plate options. Takes 32 & 40NB handrail pipe	 748 Support Bracket (Takes 32 & 40NB handrail pipe)	 750 Rail Fixed Sleeve Joiner (used with 173F)	 751 Rail support Assembly (751 saddle + 173F)
 752 Offset Rail Support Assembly (752 offset saddle + 173F)	 764 Variable Angle Elbow Fixed Sleeve Joiner	 797 "O" Ring	 301 Allen Keys	 304 Security Screw Plug (Knock in plug – fits 5/16" grub screw inner)	

Notes:-

- Not all clamps are available in all sizes – check online or call **1300 59 00 59** for availability
- Powder coated finishes are available on special request (*minimum order quantities and charges apply*)
- Clamps must not be welded or cut
- Actual carton quantities may vary from those shown
- All specifications, designs and dimensions are subject to change without notice
- Some product images are for illustration purposes only
- All Kwikclamp fittings use 304 grade stainless steel screws for superior corrosion resistance

*All pipe & plate products are hot dip galvanised for longer life, not all items and sizes are held in stock
– check online or call 1300 59 00 59 for more information*

Kwikclamp supplies a range of posts, rails, end terminations and toe plates in various lengths and configurations. The vast majority of safety handrails are 40NB medium pipe (48.3 OD x 3.2mm) with cranked post tops suited to AS1428 and Cycle Australia design guidelines. We can also have custom designs made for large scale projects where we are indeed very experienced in delivering top quality product at excellent value.

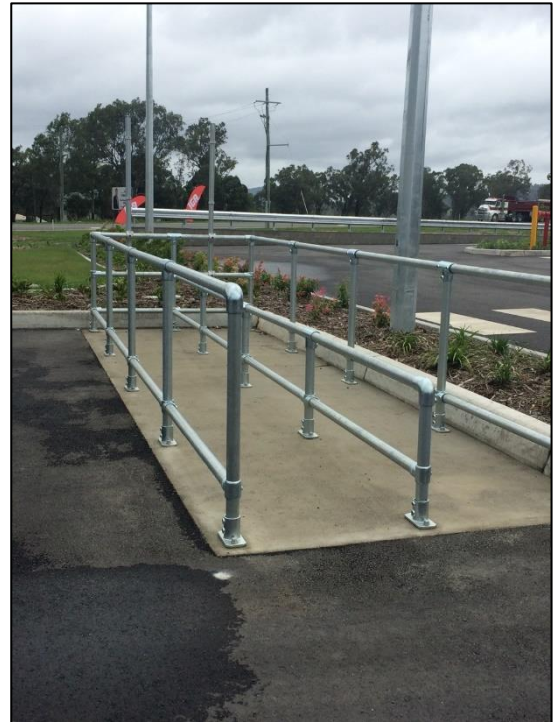
End terminations – panel type, “D” and “J” designs



Toe plates



100mm wide x 5mm, heavy galv, pre-drilled toe plates



Barrier panels – all 1000mm high



Bikeway & Pedestrian panels – same length top & bottom rails

- Designed for use with extend posts and 119 CROSS fittings
- End “D” and “J” termination sections also available
- Designed for use with 104 TEE joiner and 119 CROSS fittings
- 2000mm width panels in 900 and 1000mm heights
- 40NB medium (3.2mm) top & bottom rails
- 12mm solid rod pickets, continuous weld of rod to rail @ 120mm centres
- Hot dip galv to exceed AS4680 after welding
- Inclined versions available for ramps and stairs
- 2.4m wide panels are certified for AS1657 compliance

Kwikclamp barrier panels have been independently tested to comply with AS1657 and also comply with Cycling Australia design guidelines. Typical hot dip galv coating is around 90-120 microns – far in excess of the Australian Standard requirement of 70 microns (500gsm).

We can have any design, incline angle panel made to order, call us to enable us to help you get what you need for your projects.



Lots of bikeway and pedestrian barrier applications – all sorts of designs are possible.

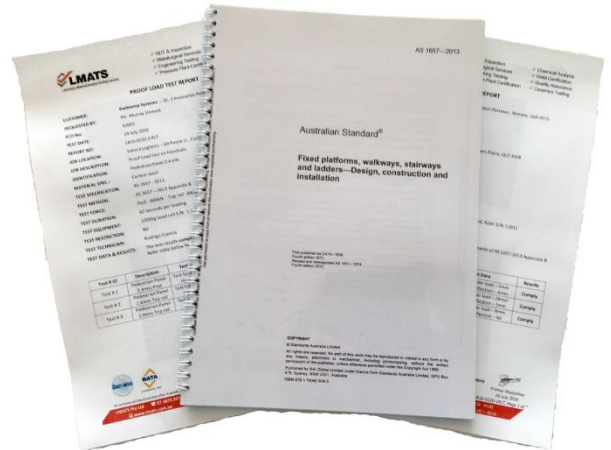
AS1657 & AS1428 Compliance Certified – quality you can rely on!

Kwikclamp barrier systems have been independently tested and certified by LMATS, a NATA registered testing authority, for compliance with AS1657 – the Australian Standard for the design, construction and installation of walkway and stairway barriers. Certification for panels and handrails at 2.4m post spacing for D48 (40NB) size rails, posts and fittings means that pedestrian and bikeway barriers and safety handrails can be erected at 2.4m post spacing:-

- Fewer posts, fasteners and fittings
- Less labour and faster installation times
- Far lower total cost than other modular barrier systems that can only be used in 1800 and 2000mm wide post spacing to comply with AS1657

A copy of the LMATS test report and AS1657 certification can be downloaded from the Kwikclamp website (www.kwikclamp.com.au). Check the website for other certifications that will become available from time to time.

- AS1428 Disability Design guidelines compliant



So when you need a very competitive and complete system of superior clamps, barrier panels, posts, rails and fasteners, Kwikclamp has what you need backed with responsive, reliable service and distributors Australia wide. Find your nearest supplier online to or call us for assistance.

