

**Dulux**<sup>®</sup>

**AVISTA**<sup>®</sup>

COLOUR THROUGH



Designed to bring  
surfaces to life





Attractive, durable  
and simple

Colour: Cinnamon



# COLOUR THROUGH CONCRETE

Create a stylish and durable coloured concrete surface for your project

## What is Colour Through

*Dulux Avista* Colour Through consists of a blend of synthetic iron oxide, titanium dioxide and chrome green oxide pigments. These pigments are ultra fine particles which are a fraction of the size of cement particles. They are UV and alkali resistant, lightfast and disperse easily in the concrete.

The oxides are mixed with the concrete to create full depth coloured concrete as the concrete is coloured all the way through the slab. Your selected colour oxide is added to the concrete truck and then thoroughly mixed in the truck prior to the pour. *Dulux Avista* Colour Through concrete is a practical and durable option which allows you to complement the existing colours around your home or project.

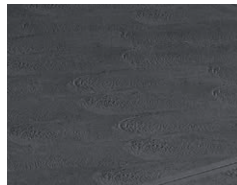


## Types of finishes

Your coloured concrete can be finished in a variety of methods to create the look you want. Some of the popular finishes include Broomed, Covered, Exposed Aggregate, Stamped and Steel Trowelled.



BROOMED



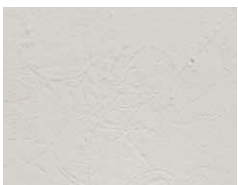
COVERED



EXPOSED AGGREGATE



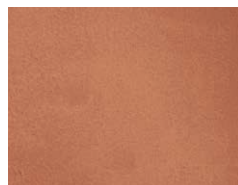
STAMPED



STEEL TROWELLED



TEXTURED



SMOOTH

## Colour variation

The colour samples in this chart have been produced as accurately as possible and are based on the oxide being added to grey concrete and the surface being sealed. However, if off white concrete is used instead, the colour will vary from the samples shown. The type of finish used can also affect the look of colour. The smoother the surface the more reflective the surface will be and the lighter the colour will look. The more textured the surface, the more the colour will change depending on the viewing angle.

## Sealing coloured concrete surface

Ensure your new coloured concrete surface is coated with a *Dulux Avista* Concrete Sealer which will help produce an attractive finish that is easier to clean and maintain. The sealer works by blocking the pores of the concrete and providing a protective layer that helps stop dirt becoming ingrained and reduces colour fading. However, sealers will wear over time and so to keep your concrete surfaces looking great, they should be resealed every 2 years. Please note that sealers should not be used on smooth concrete surfaces as it may cause the surface to become slippery, particularly when wet.

# COLOUR THROUGH

## Colour Range



GHOST GREY (2)  
FD778097-10KG



NICKEL (1)  
FD778116-10KG



COASTAL STONE (1)  
FD778100-10KG



PLUTO (1)  
FD778111-10KG



SLATE \* (2)  
FD778129-9KG



LONDON STONE (1)  
FD778125-10KG



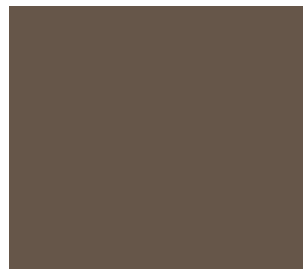
OXFORD GREY (1)  
FD778126-10KG



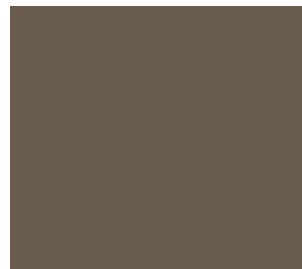
BLACK (2)  
FD778126-10KG



BLACK KNIGHT (2)  
FD778125-10KG



CLASSIC MOCHA (1)  
FD778110-10KG



COPPER (1)  
FD778120-10KG



LIGHT TOFFEE (1)  
FD778112-10KG



CUBAN BRICK (2)  
FD778118-10KG



CINNAMON (1)  
FD778118-10KG

▲ Remember that colours under direct sunlight will always appear lighter. Don't be afraid to choose darker tones.

### ▲ Colour Dose

Colour dose based on addition to 25-32 MPa grey concrete

(1) 1 x 10 kg bag per cubic metre

(2) 2 x 10 kg bag per cubic metre

\* SLATE = 1 x 9 kg bag per cubic metre



**Finish:** Broomed  
**Colour:** Ghost Grey



**Finish:** Exposed Aggregate  
**Colour:** Coastal Stone



**Finish:** Covered  
**Colour:** London Stone

The colours depicted in this brochure are based on the oxide being added to grey concrete and the surface being sealed. They are intended as a guide only. As the ingredients within the products are derived from natural sources, colours may vary from batch to batch. Variations in colour and shading may also occur depending on the job conditions, chosen texture and finishing practices employed by your concrete contractor. For projects where the colour is critical, it is recommended that you obtain a concrete sample from your concrete supplier or contractor.

Call our Customer Service Team  
on 1800 801 108 to get more  
information on *Dulux Avista* products  
or to find a contractor in your area.  
[duluxavista.com.au](http://duluxavista.com.au)



Front Cover

Base Colour: Black Knight

© Avista is a registered trade mark.

© Dulux is a registered trade mark of DuluxGroup (Australia) Pty Ltd.

Dulux Avista  
1956 Dandenong Rd  
Clayton VIC 3168  
ABN 80 069 961 968

Distributed in New Zealand by:  
Concrete Plus Limited  
150 Hutt Park Rd, Gracefield  
Telephone: 0800 657 156

Some of the images in this brochure are representations of project outcomes.

The colours depicted in this brochure are based on the oxide being added to grey concrete and the surface being sealed. They are intended as a guide only. As the ingredients within the products are derived from natural sources, colours may vary from batch to batch. Variations in colour and shading may also occur depending on the job conditions, chosen texture and finishing practices employed by your concrete contractor. For projects where the colour is critical, it is recommended that you obtain a concrete sample from your concrete supplier or contractor.